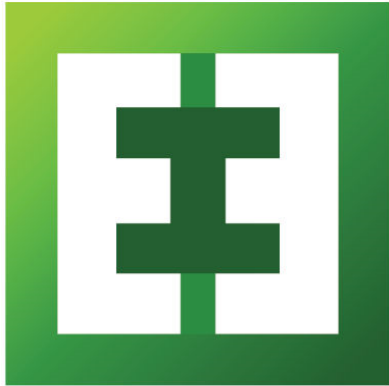


Reduce AI Implementation Risks: A Smarter Strategy for Business Success



Integrated
Enterprise Excellence®

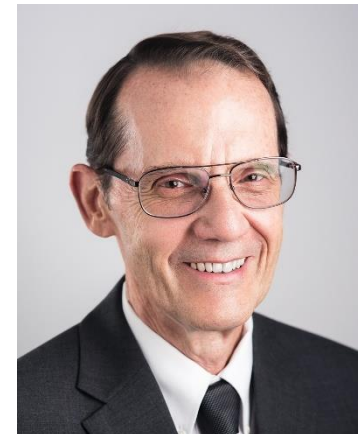
Forrest W. Breyfogle III

forrest@smartersolutions.com

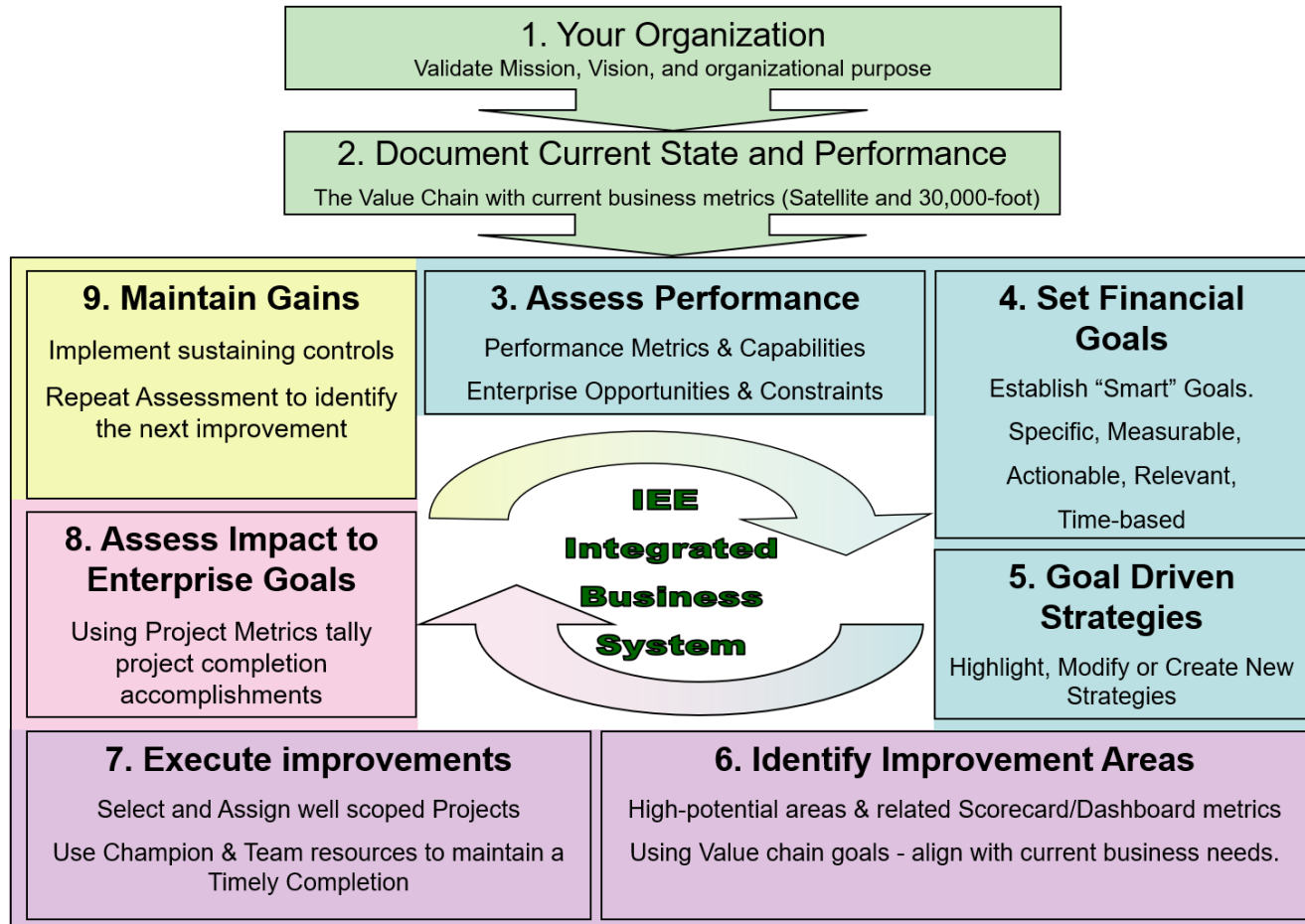
512-695-4424

2025 KSQM-QMOD-ICQSS

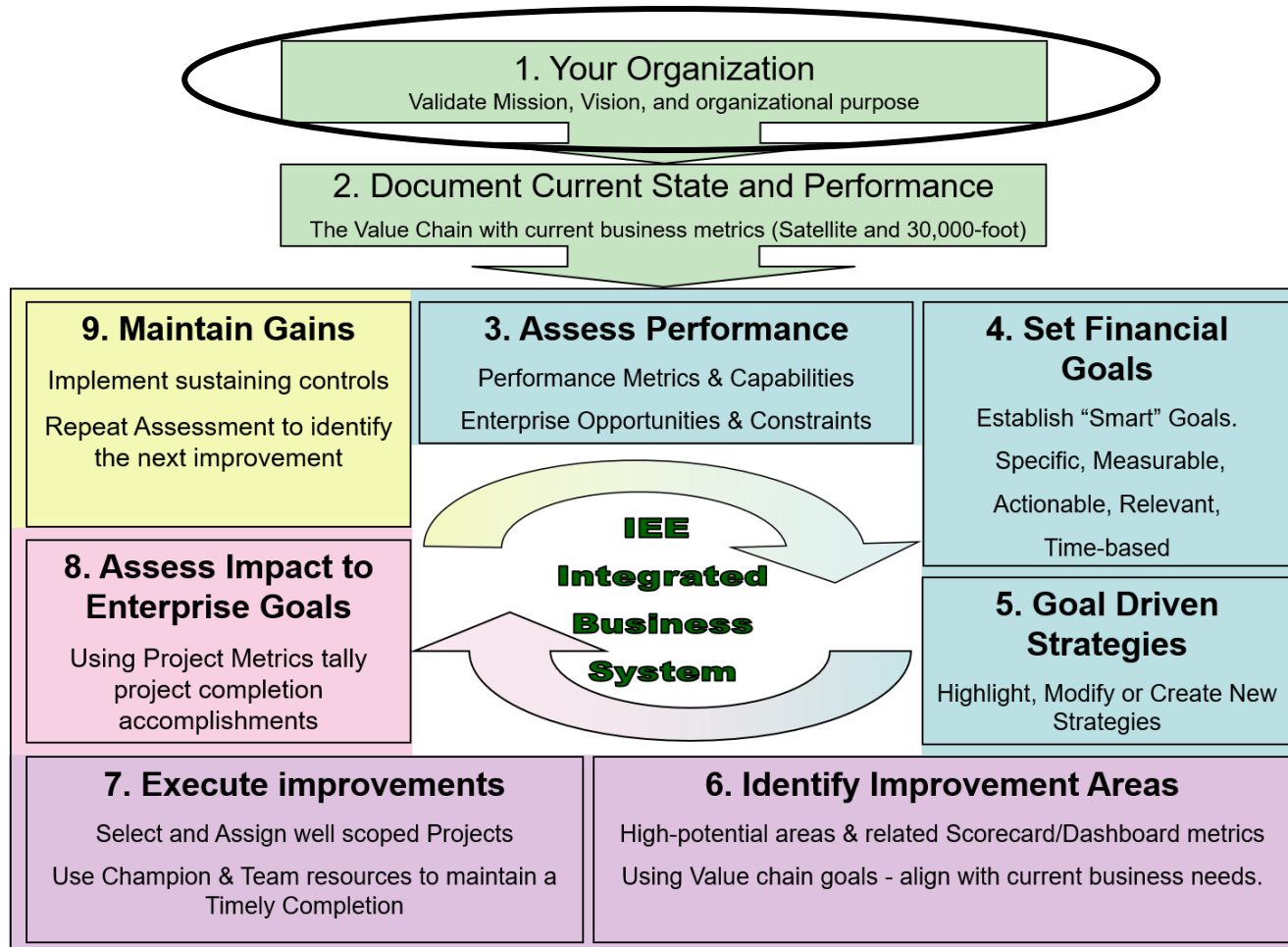
Joint International Conference



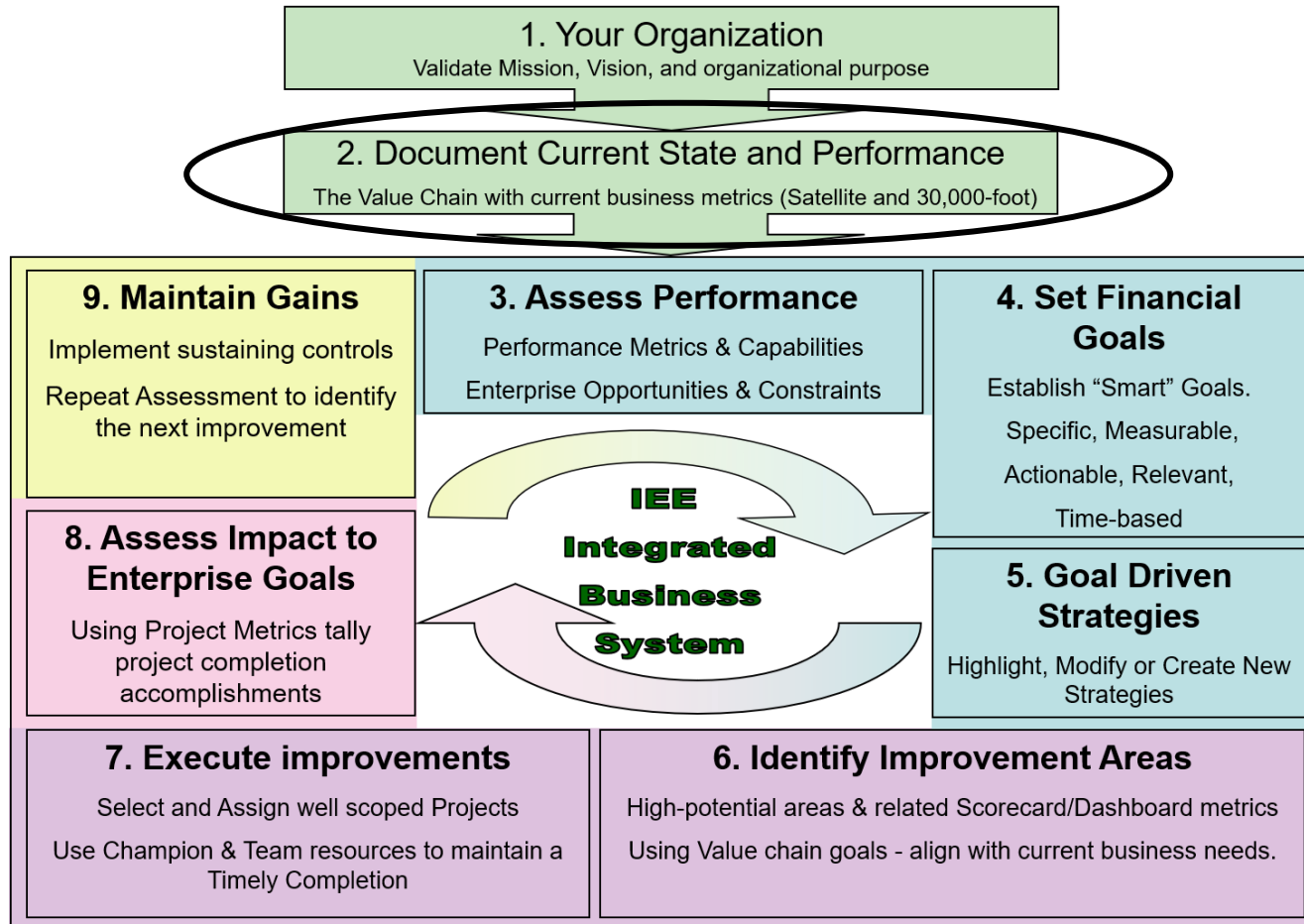
A Unified Business Management System



A Unified Business Management System

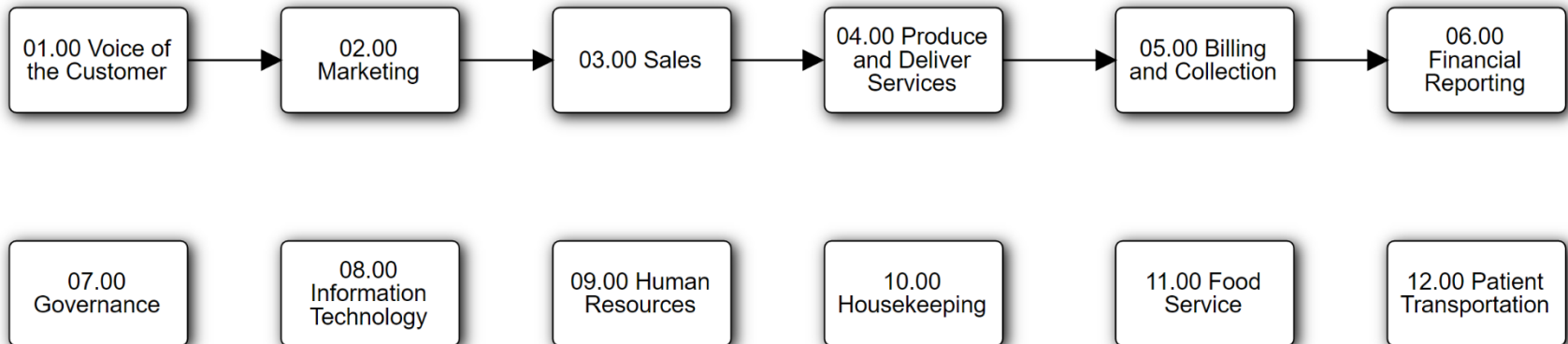


A Unified Business Management System



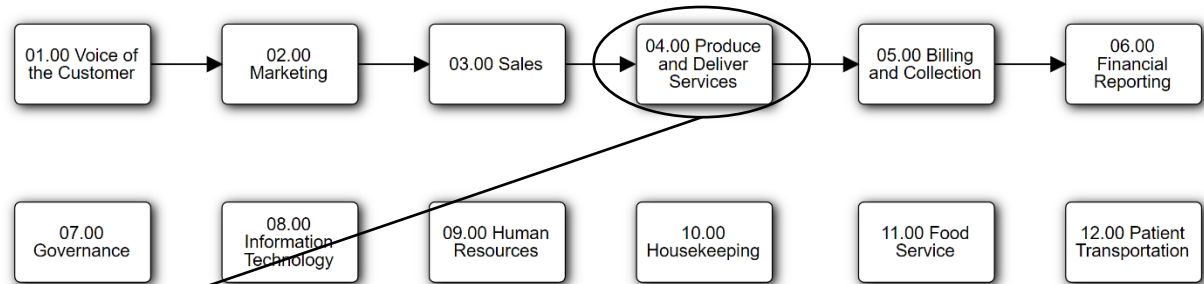
Step 2: Describe the organization's Value Chain

Harris 00.00 Enterprise



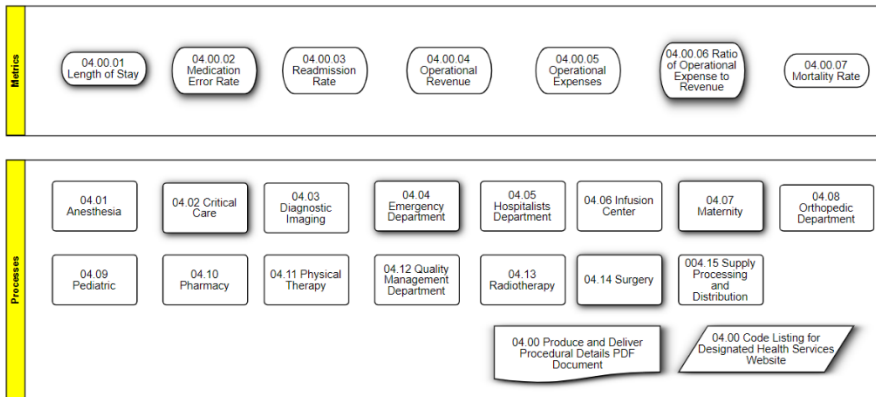
Step 2: Describe the organization's Value Chain

Harris 00.00 Enterprise



04.00 Produce and Deliver Services

00.00 Enterprise



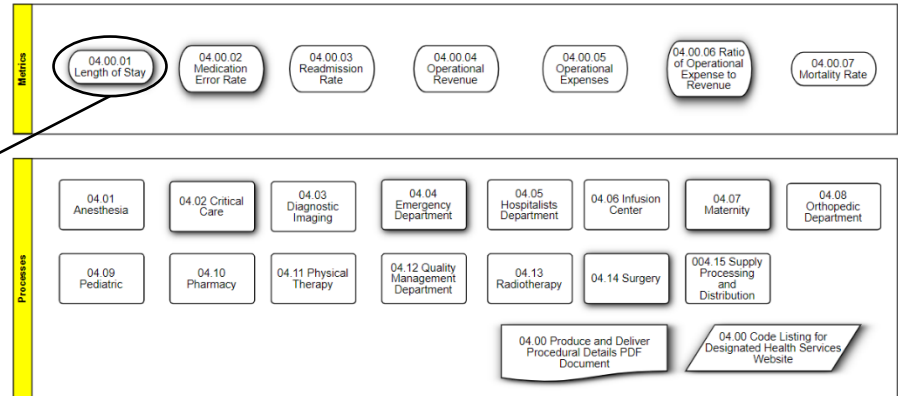


Integrated
Enterprise Excellence®

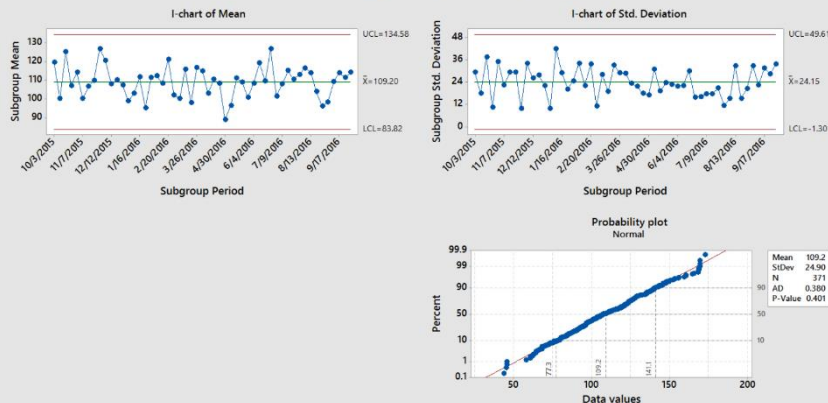
Step 2: Describe the Organization's Value Chain

04.00 Produce and Deliver Services

00.00
Enterprise



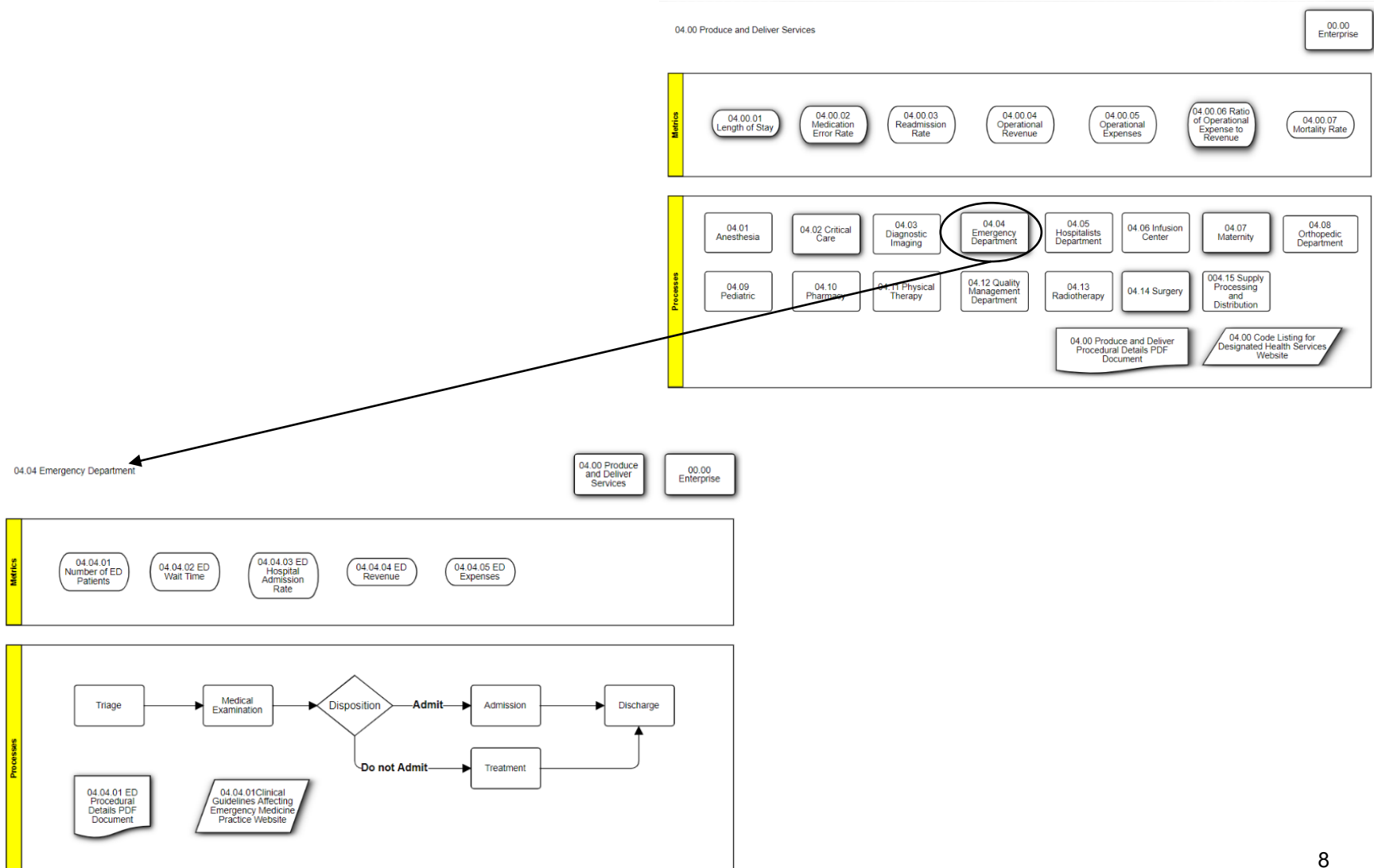
IEE Scorecard for 04.00.01 Length of Stay (Hours)
Weekly Subgrouping



The process is predictable.

The est. median is 109.19 with 80% of the events between 77.285 and 141.11.

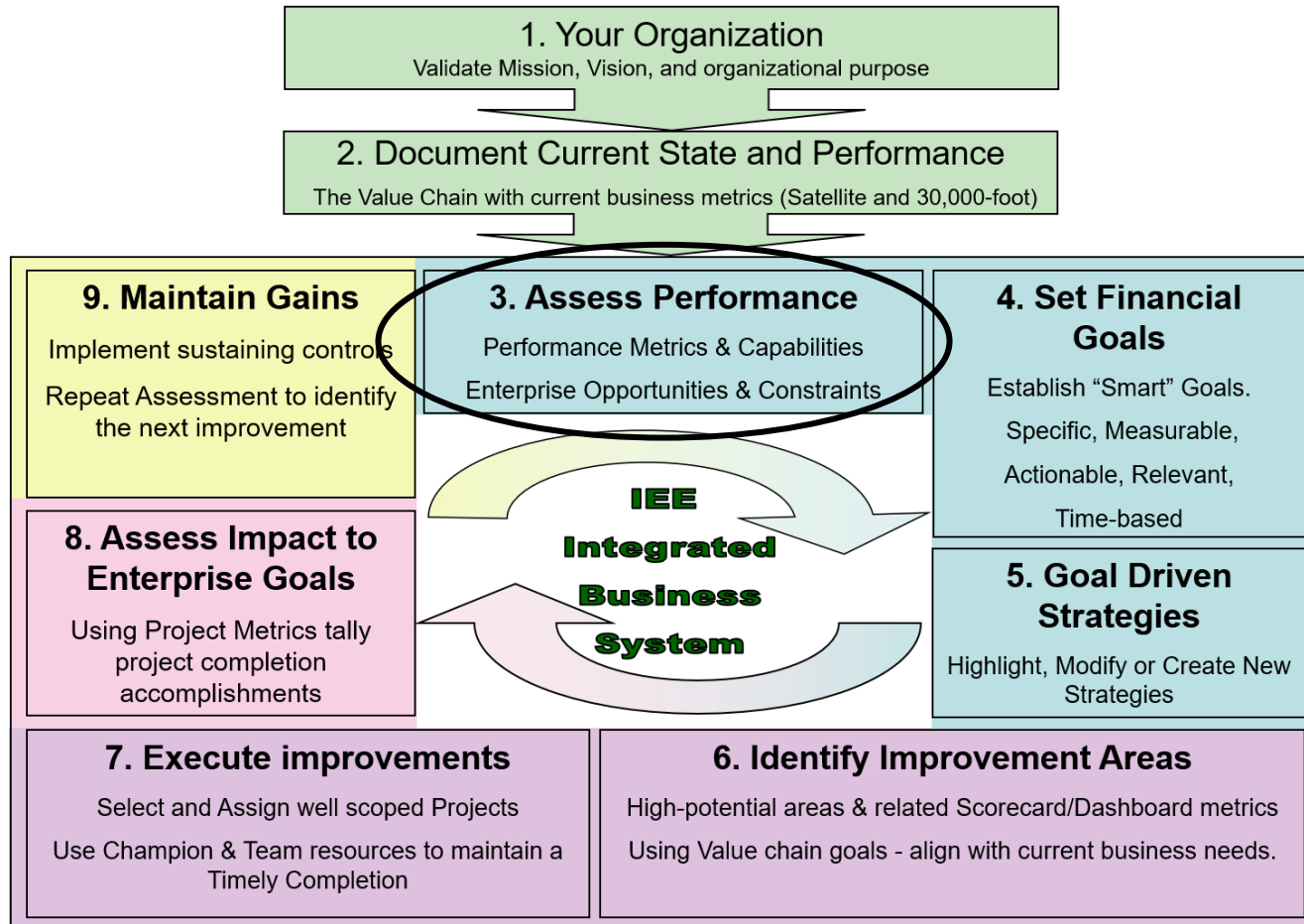
Step 2: Describe the Organization's Value Chain





Integrated
Enterprise Excellence®

Step 3: Analyze IEE Value Chain

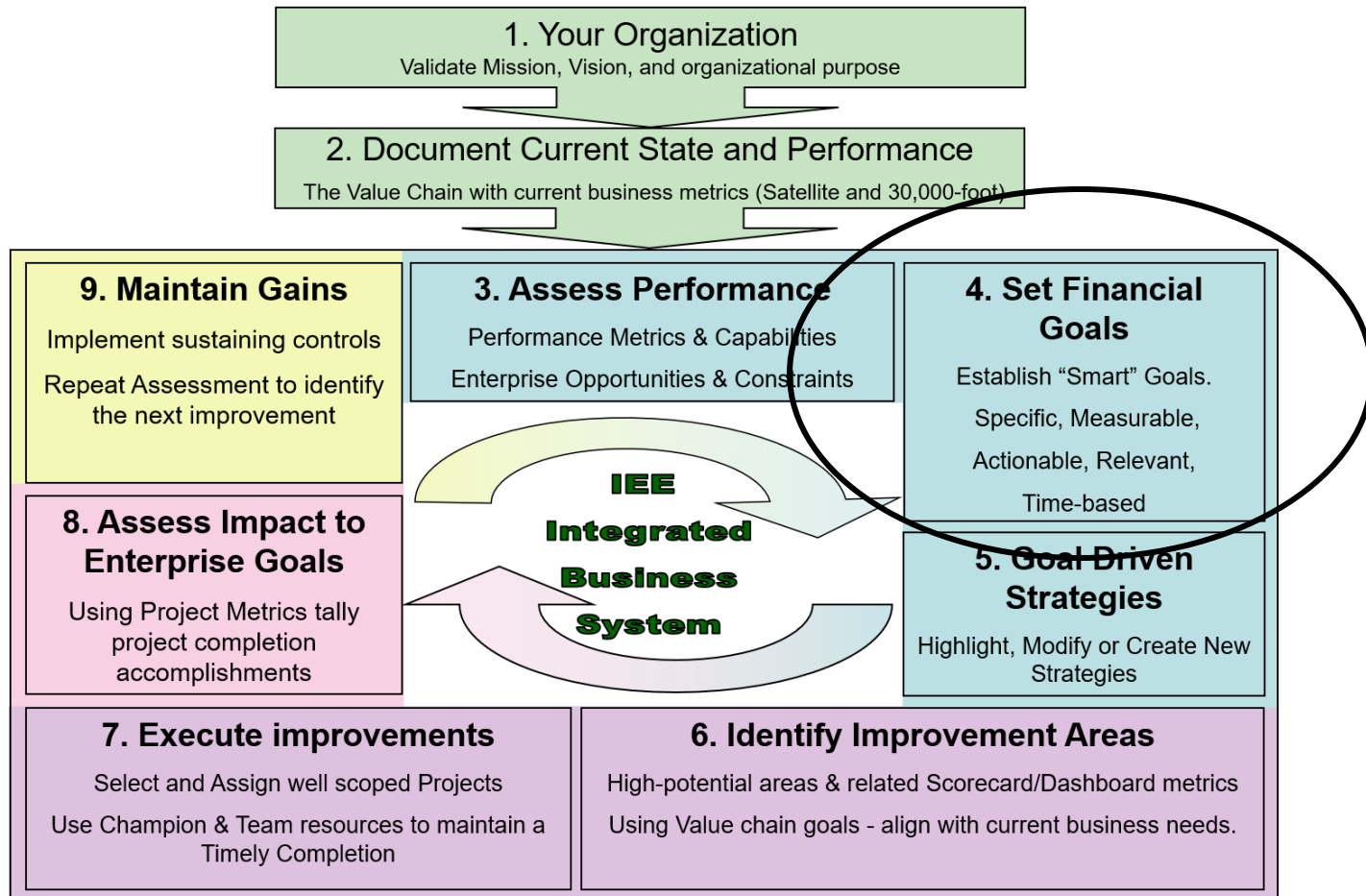


AI can enhance this IEE step's objective!



Integrated
Enterprise Excellence®

Step 4: Set Financial Goals

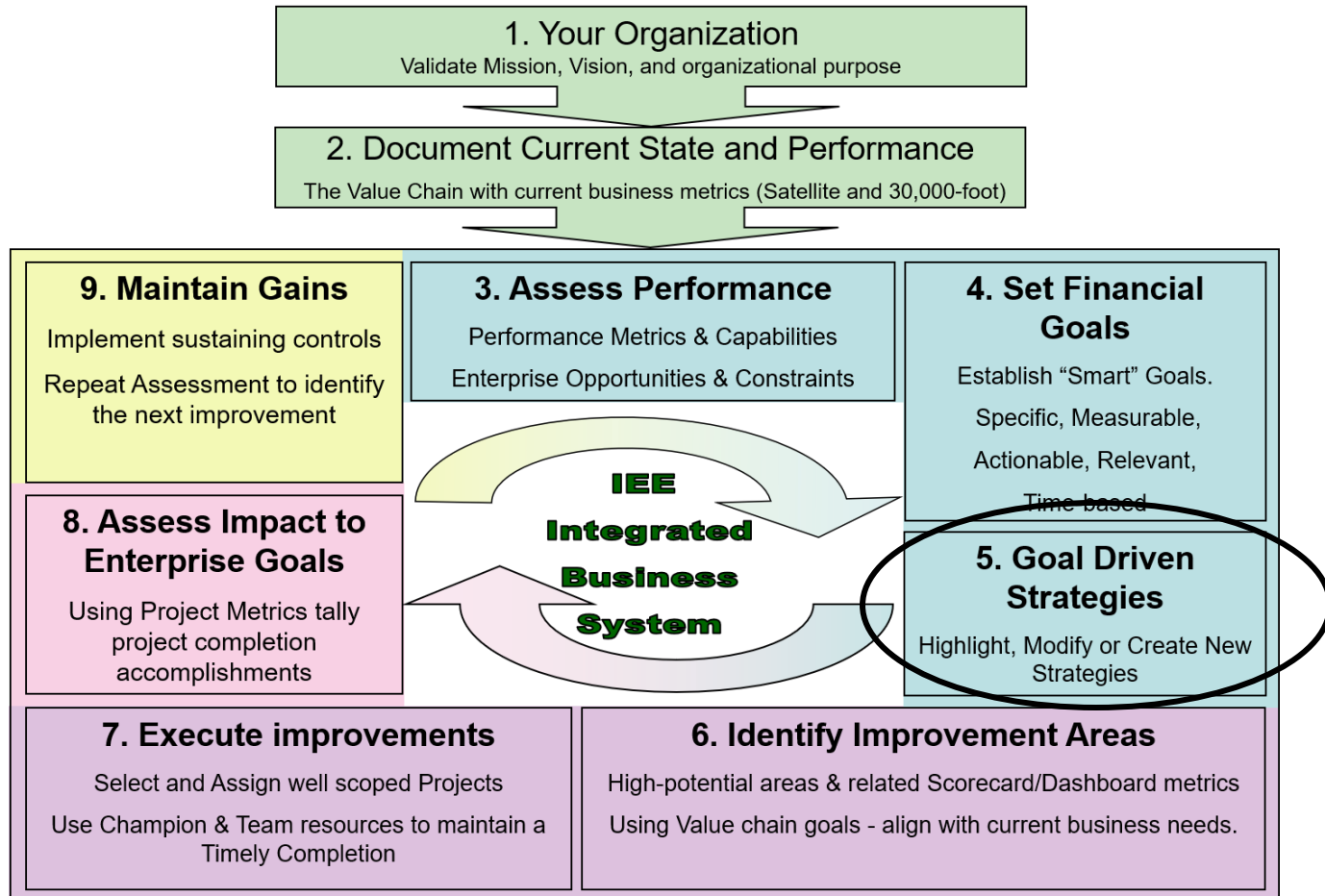


AI can enhance this IEE step's objective!



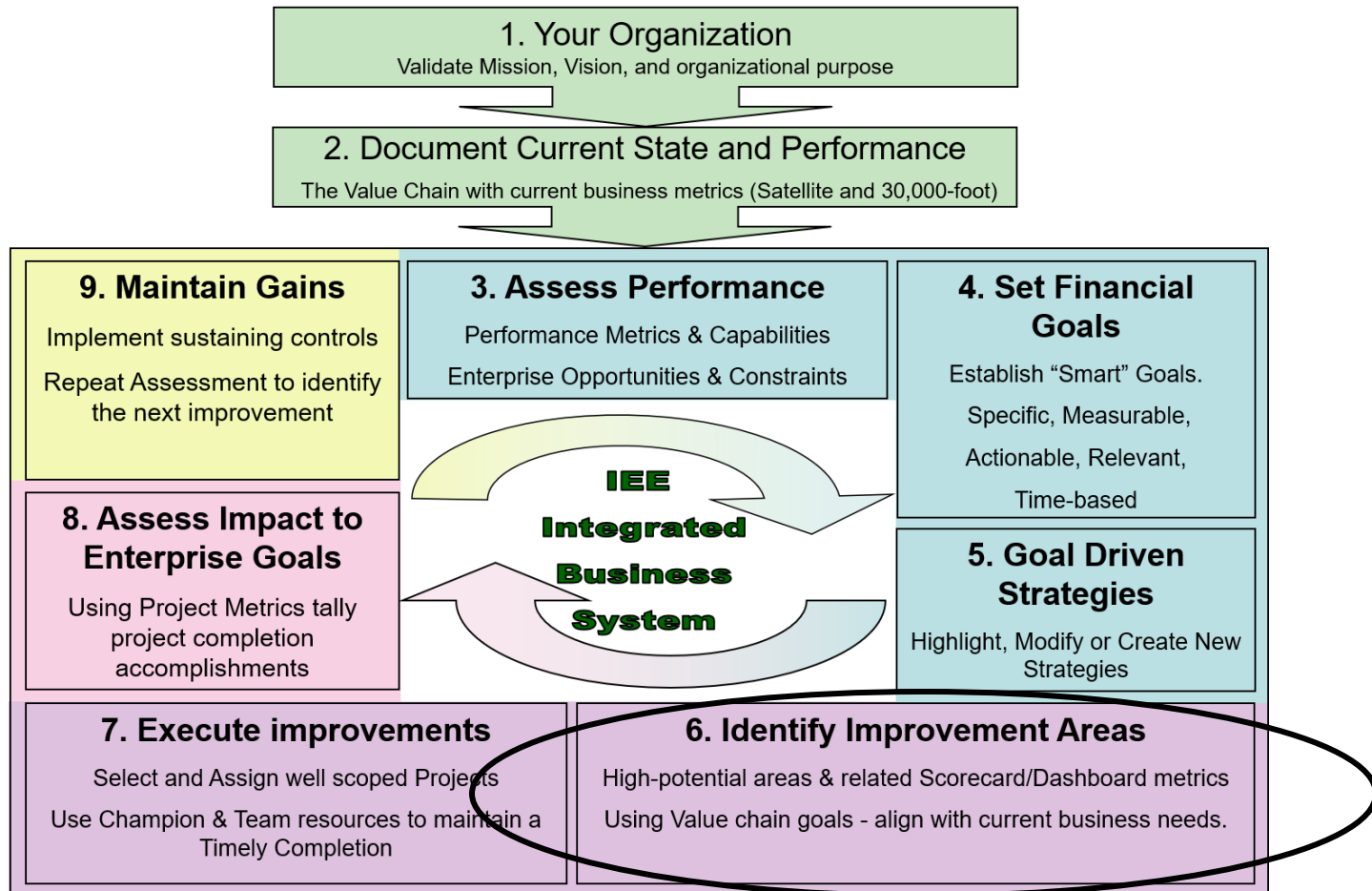
Integrated
Enterprise Excellence®

Step 5: Set Goal Driven Strategies



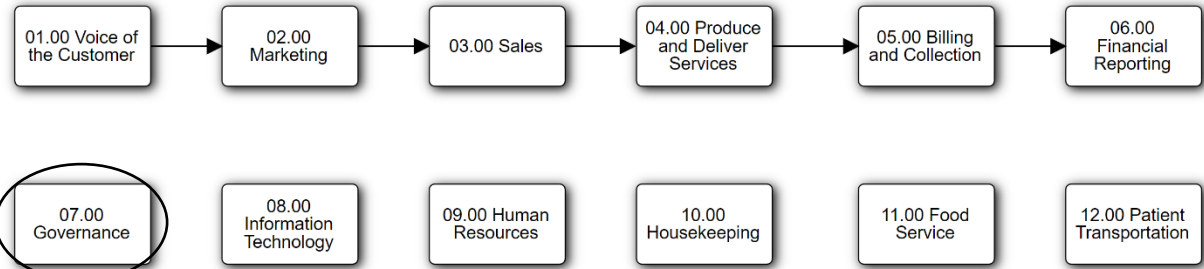
AI can enhance this IEE step's objective!

Step 6: Identify High Potential Improvement Areas



Step 6: Identify High Potential Improvement Areas

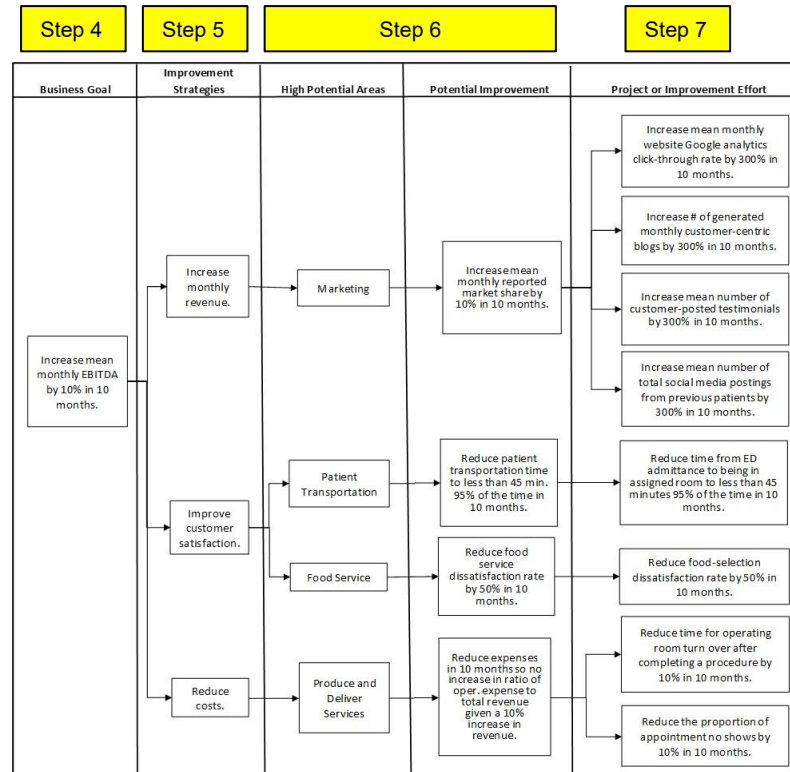
Harris 00.00 Enterprise



Business Goal	Improvement Strategies	High Potential Areas	Potential Improvement	Project or Improvement Effort
Increase mean monthly EBITDA by 10% in 10 months.	Increase monthly revenue.	Marketing	Increase mean monthly reported market share by 10% in 10 months.	Increase mean monthly website Google analytics click-through rate by 300% in 10 months.
				Increase # of generated monthly customer-centric blogs by 300% in 10 months.
				Increase mean number of customer-posted testimonials by 300% in 10 months.
				Increase mean number of total social media postings from previous patients by 300% in 10 months.
	Improve customer satisfaction.	Patient Transportation	Reduce patient transportation time to less than 45 min. 95% of the time in 10 months.	Reduce time from ED admittance to being in assigned room to less than 45 minutes 95% of the time in 10 months.
	Reduce costs.	Food Service	Reduce food service dissatisfaction rate by 50% in 10 months.	Reduce food-selection dissatisfaction rate by 50% in 10 months.
		Produce and Deliver Services	Reduce expenses in 10 months so no increase in ratio of oper. expense to total revenue given a 10% increase in revenue.	Reduce time for operating room turn over after completing a procedure by 10% in 10 months.
				Reduce the proportion of appointment no shows by 10% in 10 months.

AI can enhance this IEE step's objective!

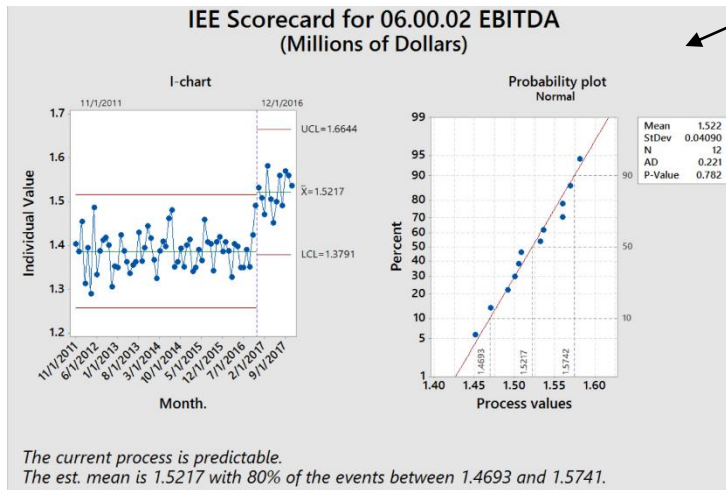
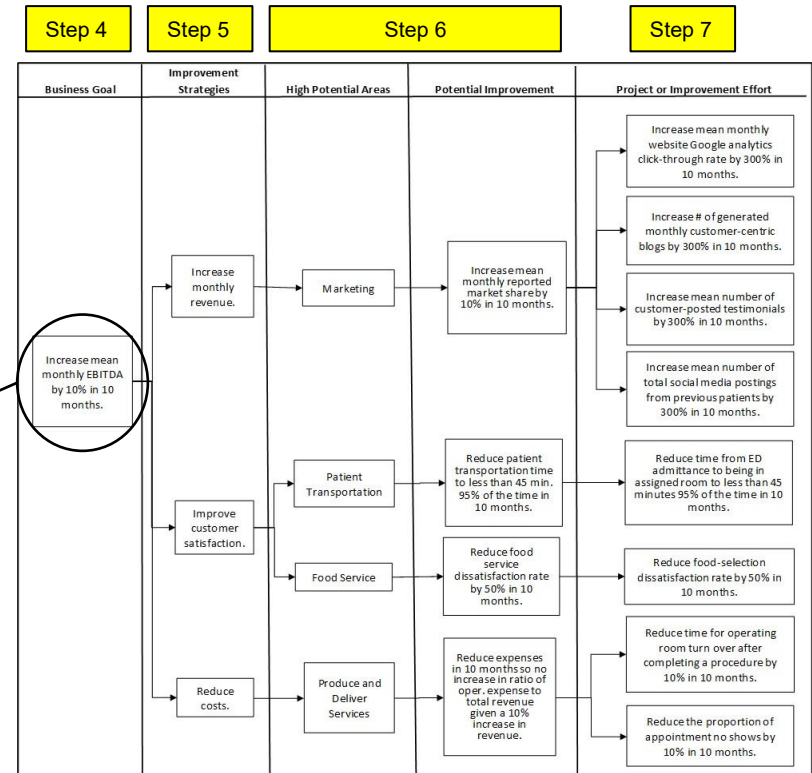
Step 6: Identify High Potential Improvement Areas



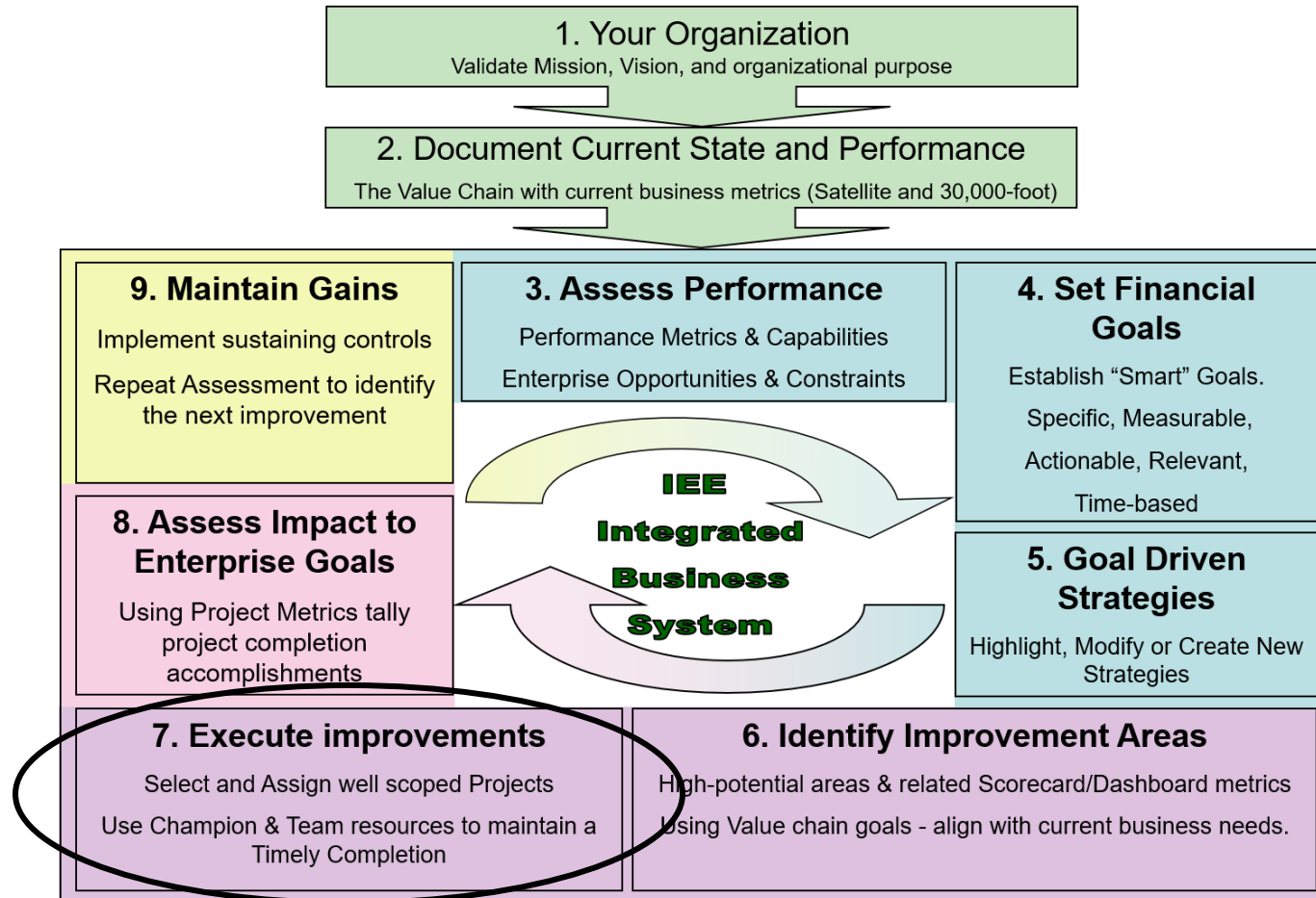
Enterprise Improvement Plan (EIP)

AI can enhance this IEE step's objective!

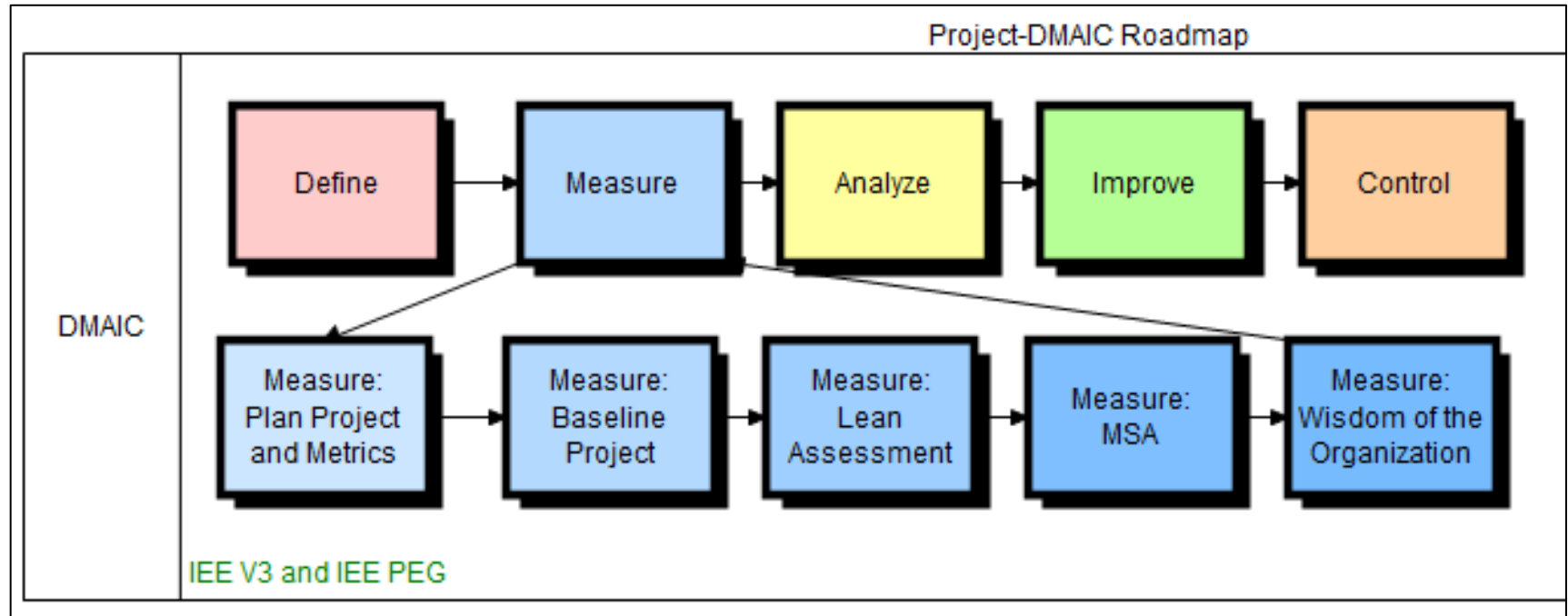
Step 6: Identify High Potential Improvement Areas



Step 7: Execute Improvement Projects



Step 7: Execute Improvement Projects



<https://smartersolutions.com/roadmap/>

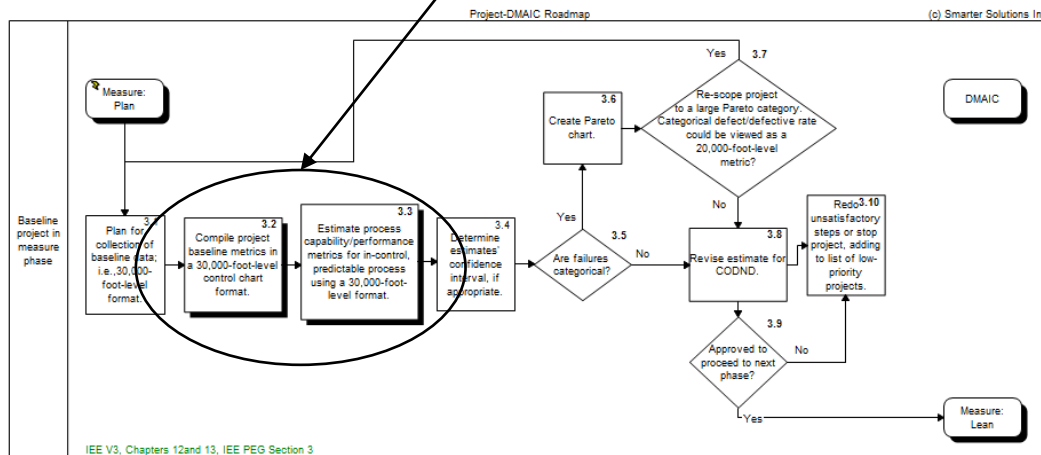
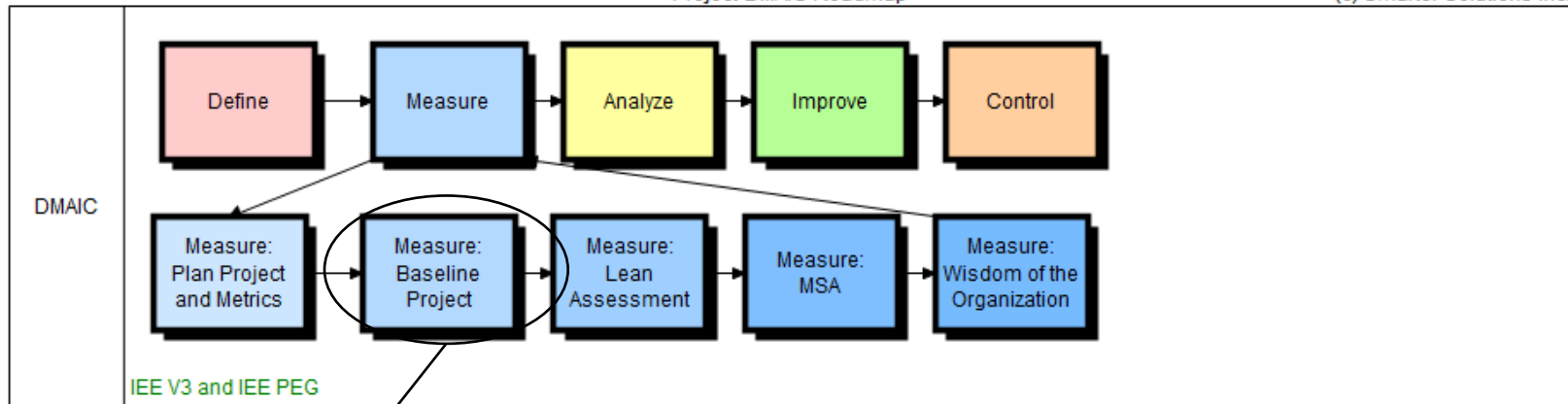


Integrated
Enterprise Excellence®

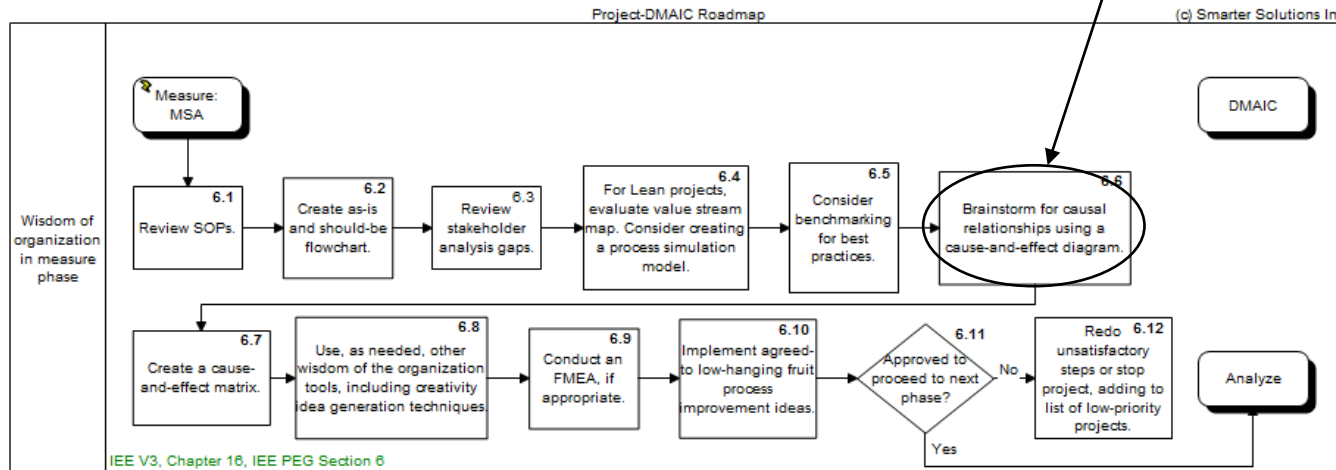
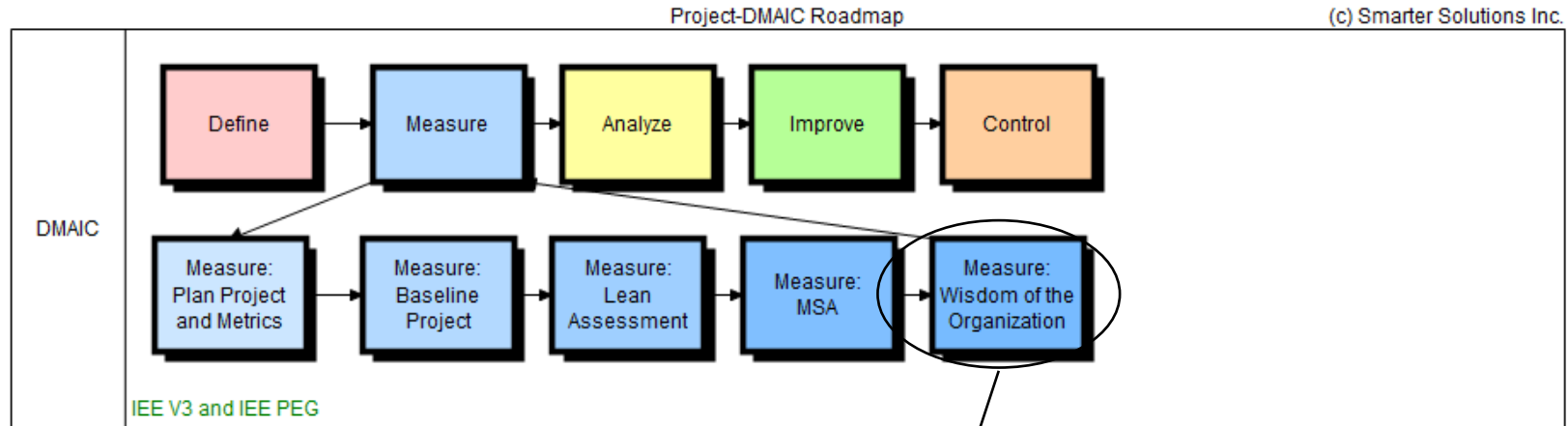
Step 7: Execute Improvement Projects

Project-DMAIC Roadmap

(c) Smarter Solutions Inc.

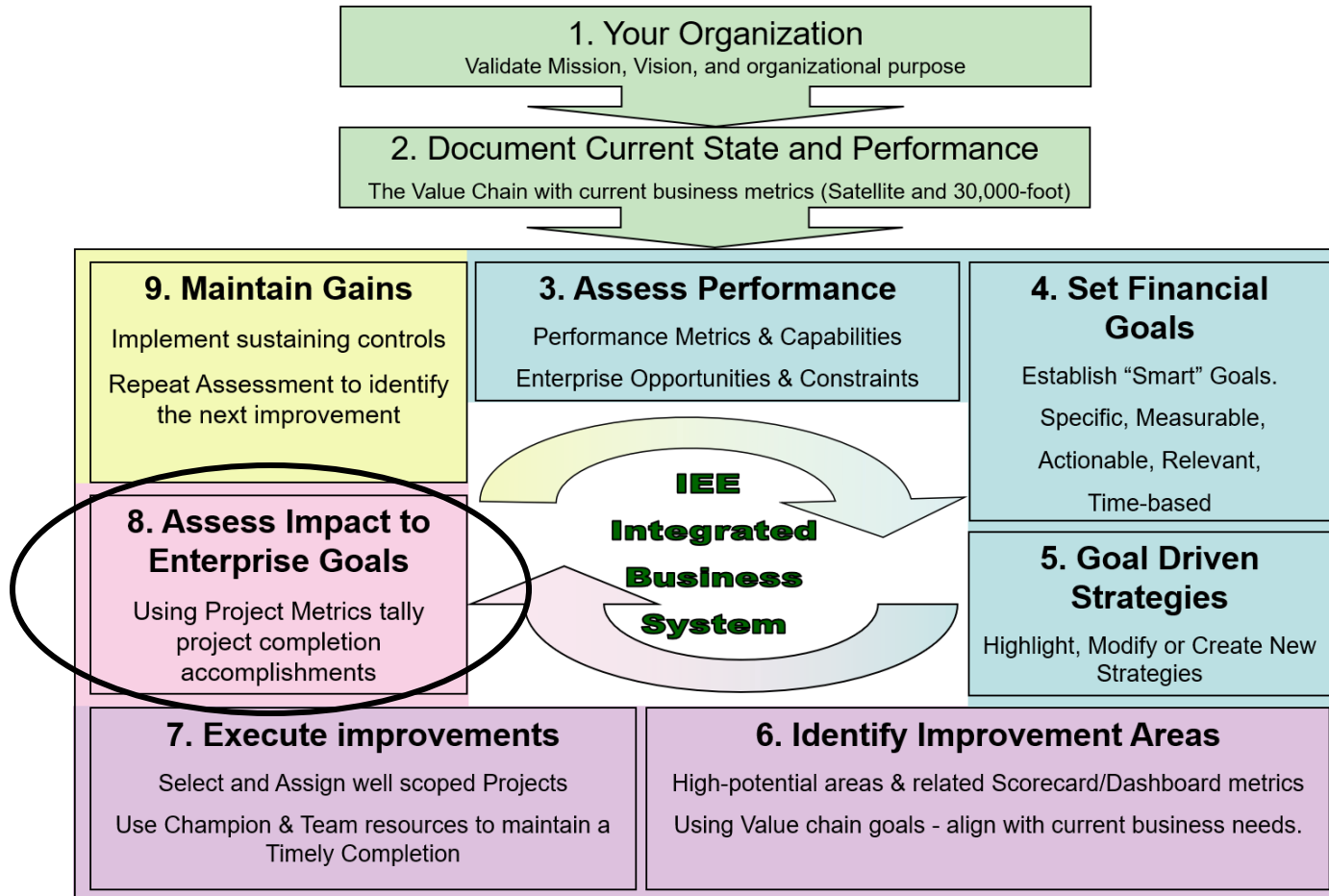


Step 7: Execute Improvement Projects

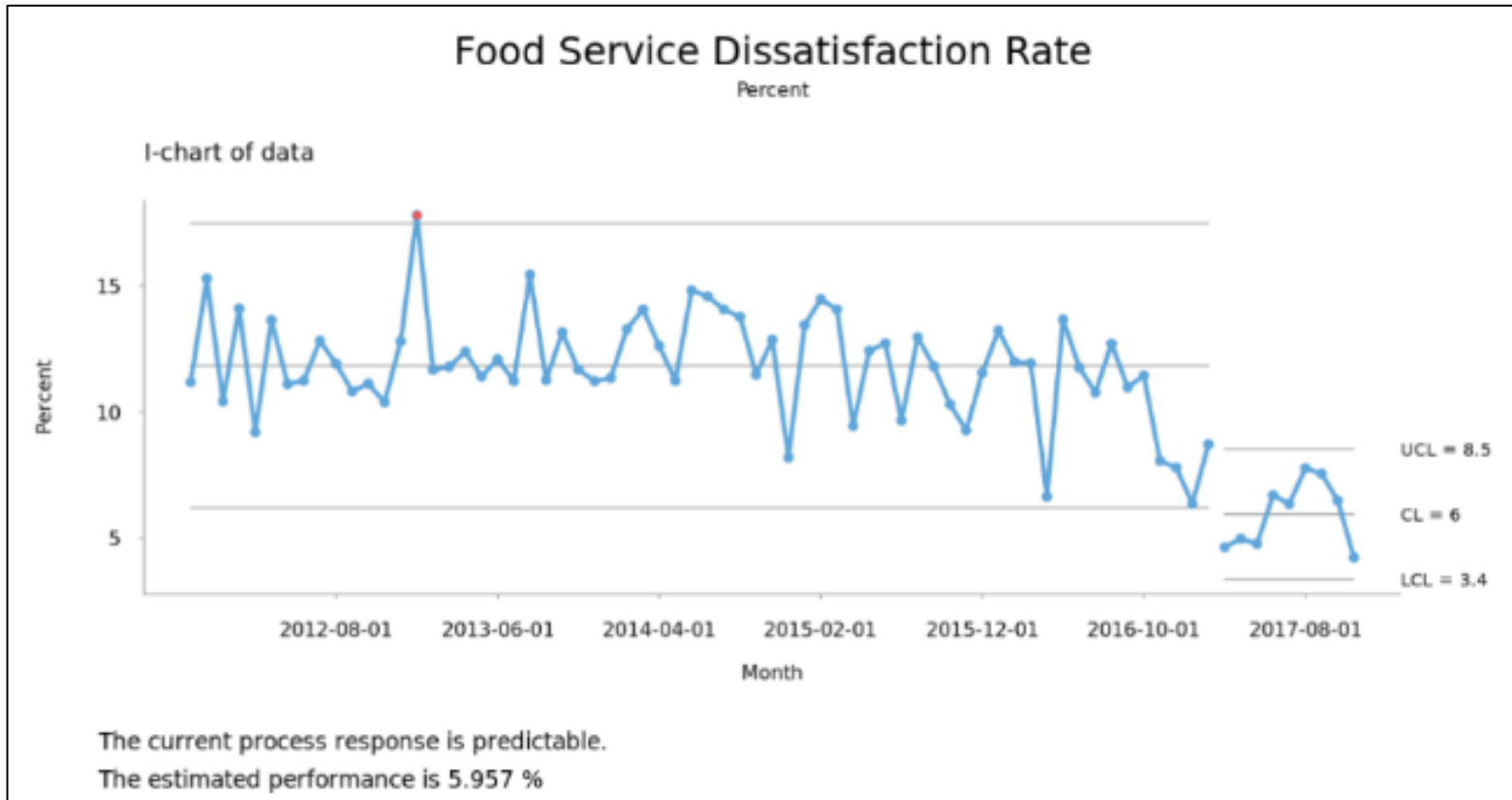


AI can enhance this IEE step's objective!

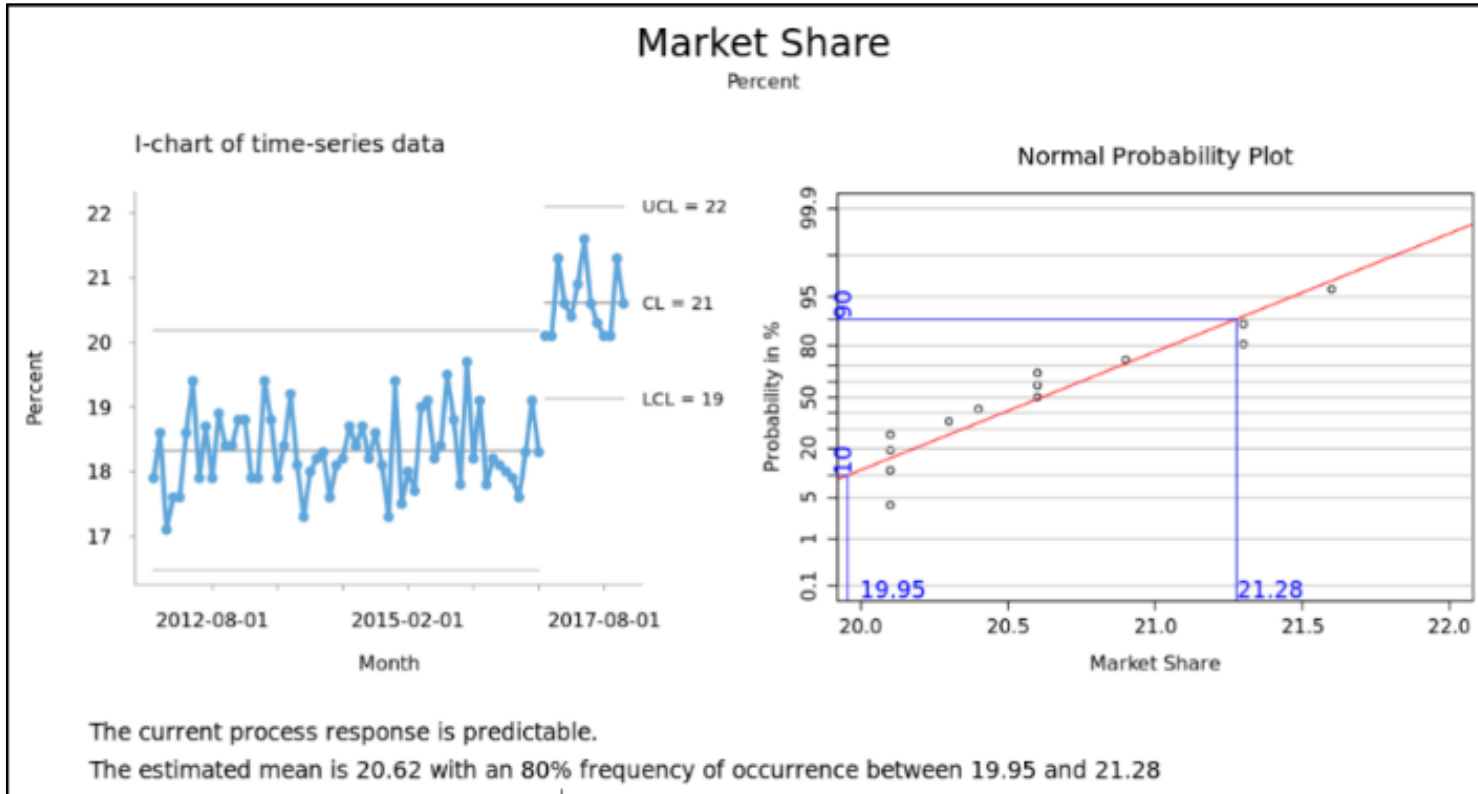
Step 8: Assess the Impact of the Improvement Projects



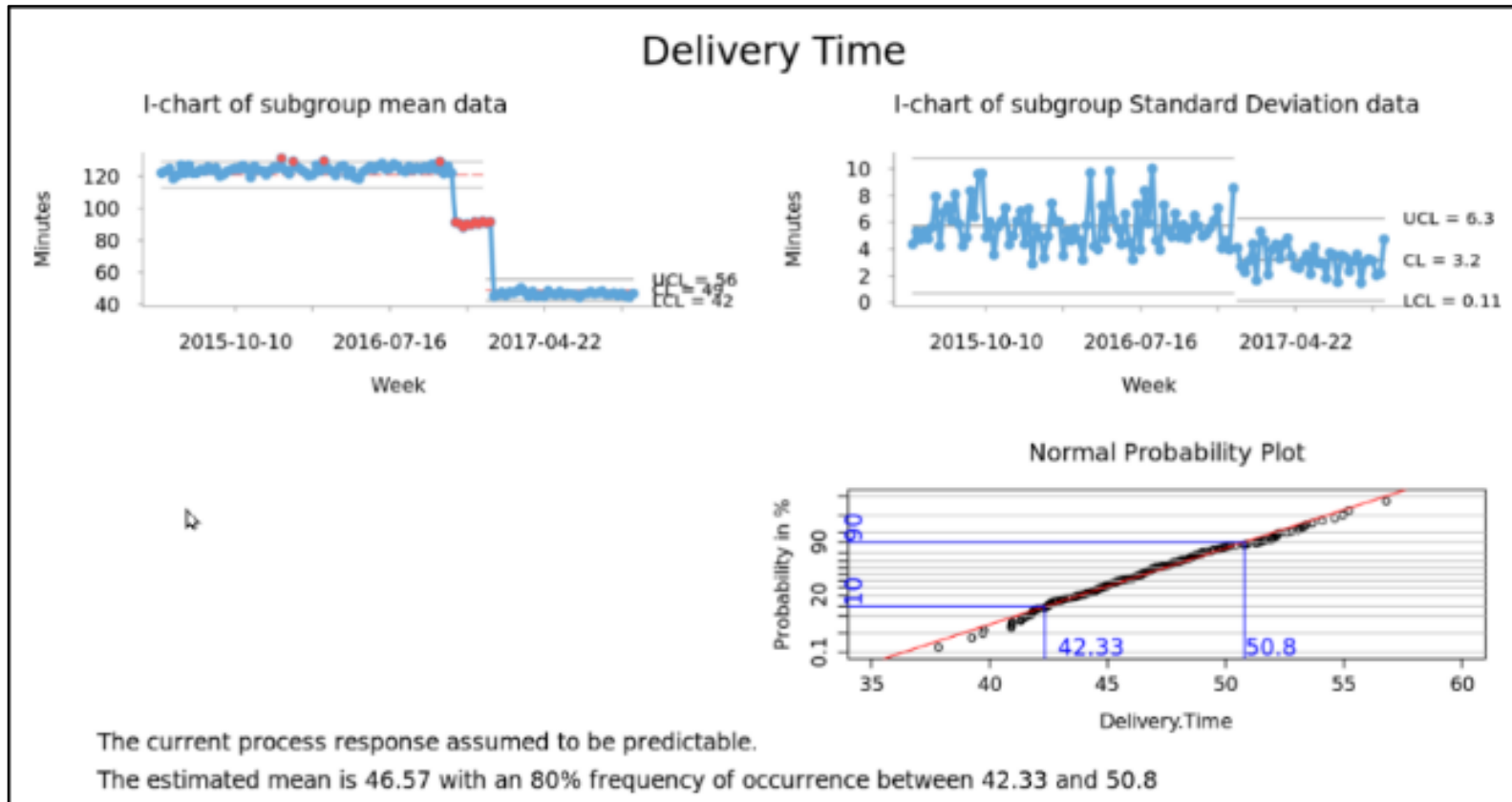
Step 8: Assess the Impact of the Improvement Projects



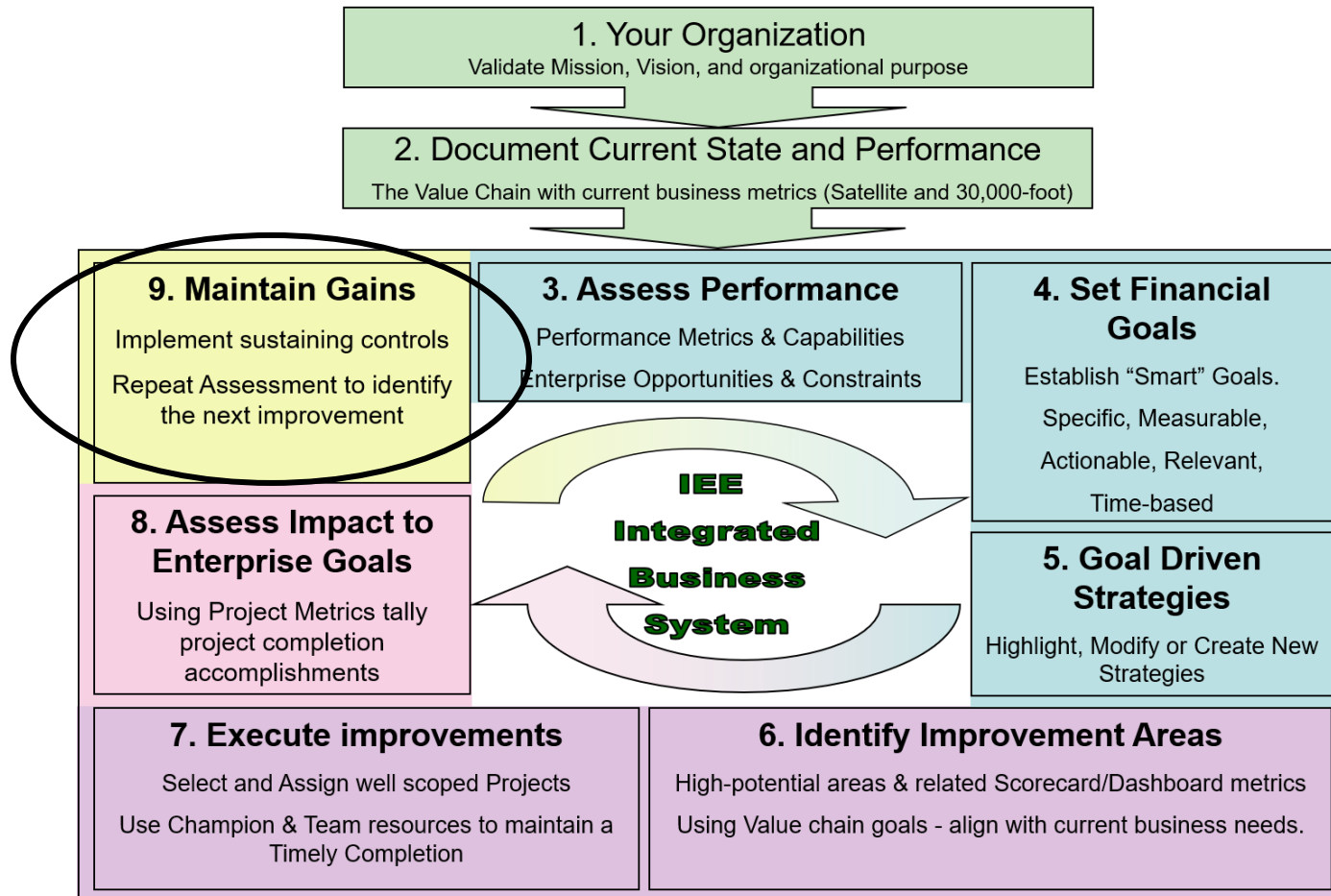
Step 8: Assess the Impact of the Improvement Projects



Step 8: Assess the Impact of the Improvement Projects

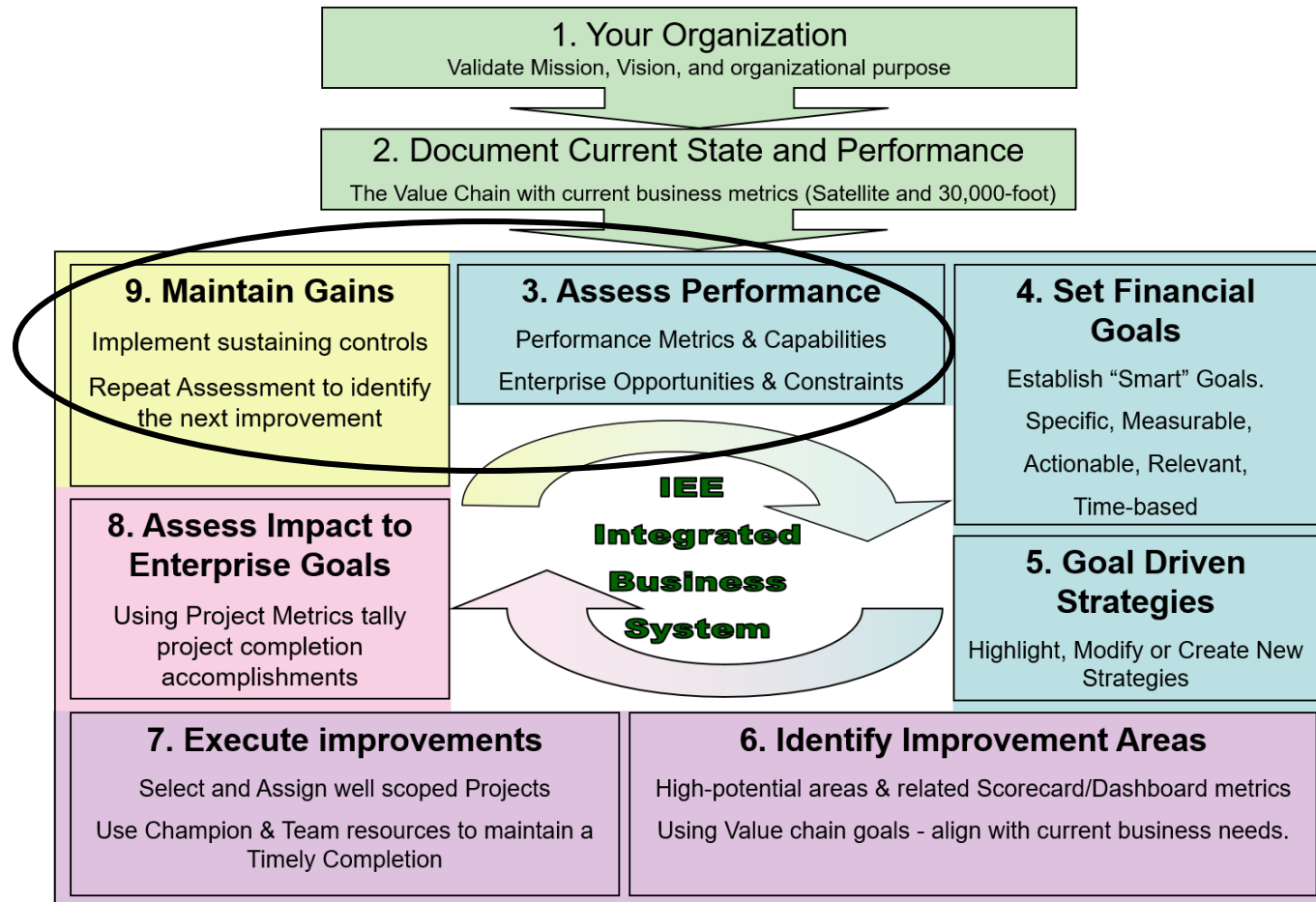


Step 9: Maintain the Gain and Loop Back to Step 3

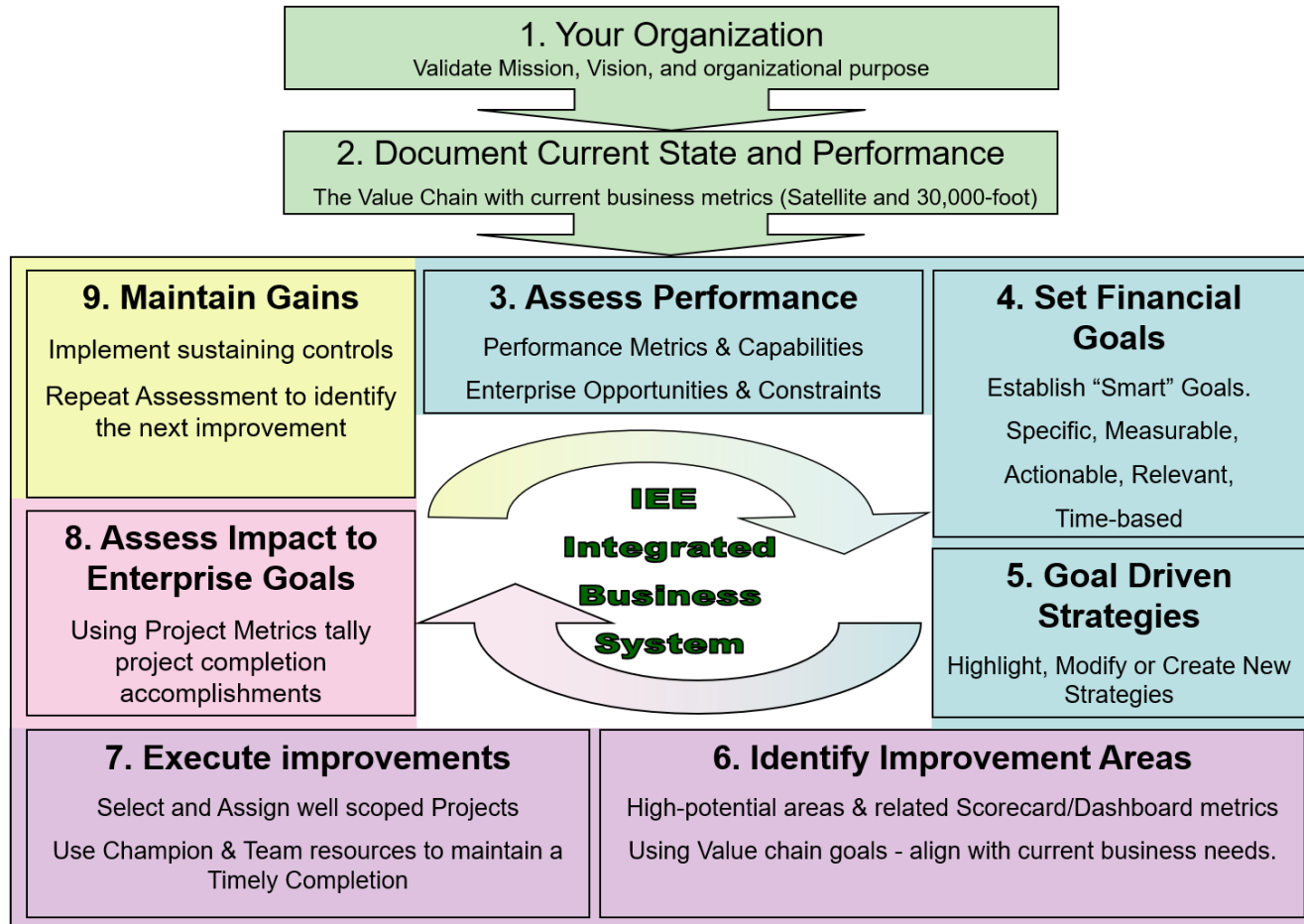


Enterprise Performance Reporting System (EPRS) software:
<https://smartersolutions.com/integrated-enterprise-excellence-iee-business-management-system-software/>

Step 9: Maintain the Gain and Loop Back to Step 3



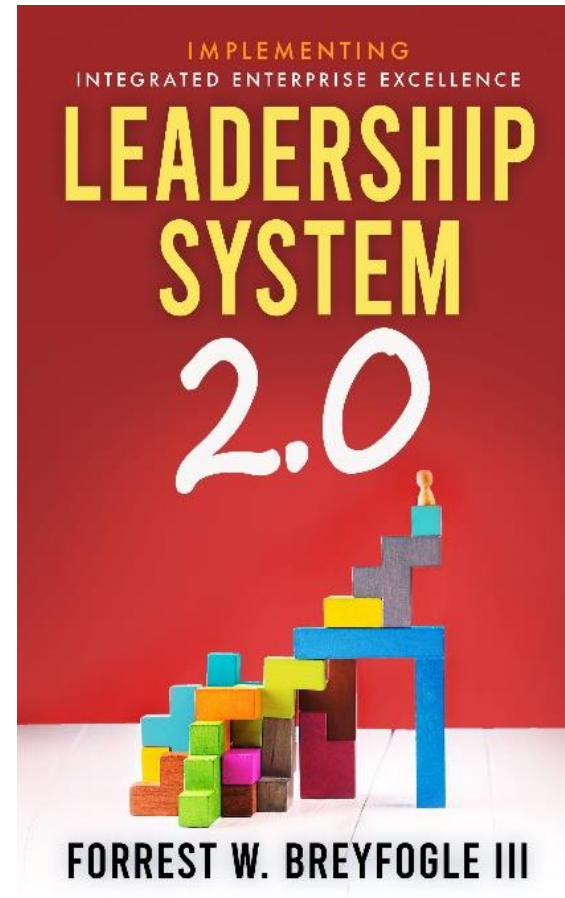
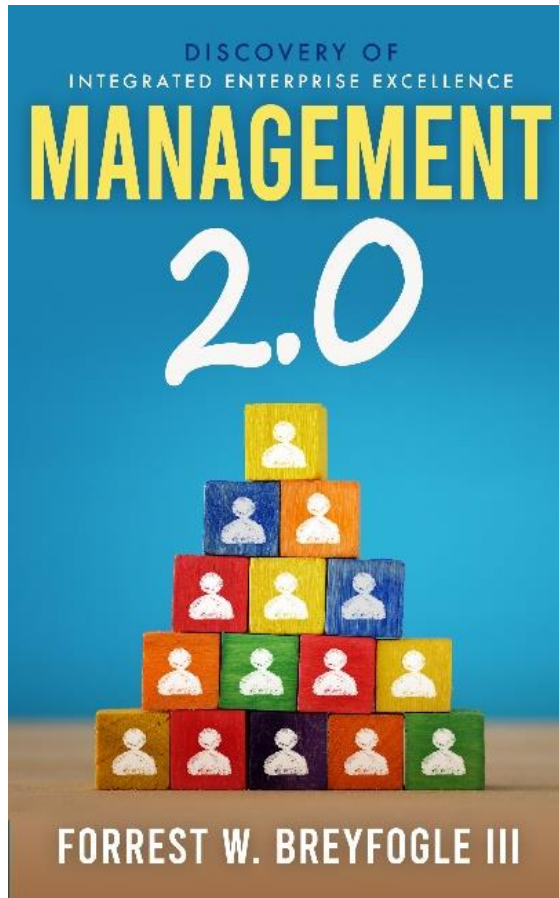
Step 9: Maintain the Gain and Loop Back to Step 3





Integrated
Enterprise Excellence®

How-to Guidance



On Amazon, search “Forrest Breyfogle” to see more than 15 how-to measure and improve books



Integrated
Enterprise Excellence®

Next Steps

- Contact me if you would like a PDF copy of this presentation, which has the referenced links..
- Contact Forrest Breyfogle to discuss how IEE can be applied to benefit you and organizations that you work with.
 - forrest@smartersolutions.com
 - 1-512-695-4424
- Schedule a video meeting session with Forrest through the following link, which is also available on the homepage of smartersolutions.com <https://smartersolutions.com/schedule-zoom-session/>